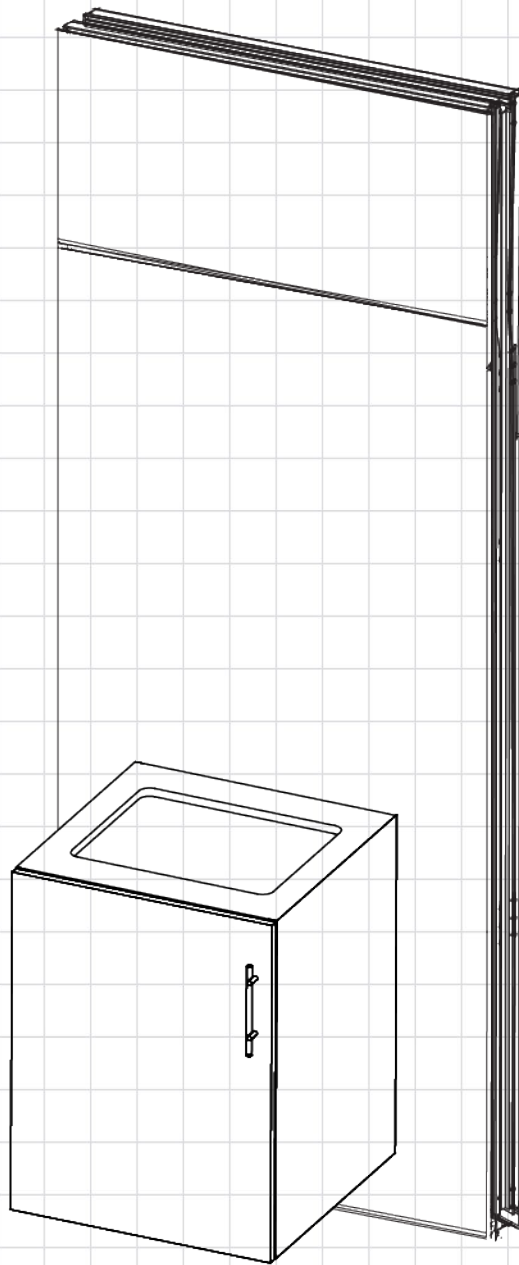


# Base Casework Cabinet with Door

Tech Sheet





# COMPONENTS + MATERIALS

## CASEWORK HANGING COMPONENTS

|  |   |
|--|---|
| French cleat   | Drywall or wall panel                             |
| Cabinet mount cleat thickness  | 5⁄8" (16mm)                                       |
| Wall mount cleat thickness   | 3⁄4" (19mm)                                       |
| For more information, refer to the <a href="#">Casework Hang Type Design Guide</a> . |   |
| Wall hang brackets—Classic or Enzo   |   |
| Hidden   | Upper cabinet, storage cabinets and base cabinets |
| Visible  | Base cabinets with countertops                    |
| Wall hang brackets for Thief   |   |
| Upper cabinet or storage cabinets architectural                                      | Drywall   |

## CASEWORK FLOOR COMPONENTS

|  |   |
|--|---|
| Toe Kick Leveler   |   |
| Default height   | 4" (102mm)  |
| Height range   | 3 3⁄4" (95mm)–9" (229mm)  |
| Once installed, adjustability of 2 1⁄2" (63mm)                           |   |
| <b>NOTE:</b> Toe kicks below 4" high (102mm) will not receive a leveler. |   |
| DIRTT furniture legs   |   |
| Finish   | Satin Nickel  |
| Leg heights  | 2" (51mm)<br>3 15⁄16" (100mm)<br>5 15⁄16" (150mm)<br>7 7⁄8" (200mm) |

**NOTE:** See the [Casework Furniture Legs](#) tech sheet for more information.  
Once installed, adjustability is 3⁄8" (10mm).

## CASEWORK COMPONENTS

### Doors

|                         |             |
|-------------------------|-------------|
| Top reveal              | 1⁄16" (2mm) |
| Side reveal (each side) | 1⁄32" (1mm) |
| Bottom reveal           | 0" (0mm)    |
| Door thickness          | 3⁄4" (19mm) |
| Two-door cabinet gap    | 1⁄16" (2mm) |

## Interior Shelves

|  |  |
|--|--|
| Shelf finish should coordinate with interior finish of cabinet.                          |  |
| Shelf width  | 1⁄16" (1mm) smaller than cabinet           |
| Shelf depth  | 1⁄4" (6mm) smaller than cabinet            |
| Shelf thickness  | 3⁄4" (19mm)                                |
| Metal pin length   | 3⁄8" (10mm) Length                         |
| Hole diameter  | 3⁄16" (5mm)                                |
| On center  | 1 1⁄4" (32mm)                              |
| Integrated LED lighting  |  |
| Color options  | Cool (4,000 Kelvin)<br>Warm (3,000 Kelvin) |
| File drawers   |  |
| Refer to the <a href="#">Casework File Bars Installation Guide</a> for more information. |  |
| Optional two-sided tape for smooth flooring  |  |
| Optional seismic base track  |  |

## CASEWORK HARDWARE

|   |                   |
|---|-------------------|
| Refer to the <a href="#">Standard Pull Specification</a> document for more information. |                   |
| Door pulls  |                   |
| Bow pull  |                   |
| Rod pull  |                   |
| Tab pull  |                   |
| Door hinges   |                   |
| Blum, European, Clip Top hinges   |                   |
| Standard hinge type   | 107° full overlay |
| Refer to the <a href="#">Hinge Tech Sheet</a> for full list of hinge types.             |                   |

## OPTIONAL CASEWORK HARDWARE

DIRTT-approved custom hardware (supplied "by others")

## WALL PANEL OPTIONS

|                                     |
|-------------------------------------|
| ChromacoatPlus/Chromacoat (painted) |
| Wood Veneer on MDF                  |
| Thermofoil on MDF Tiles             |
| DIRTT-approved custom finishes      |

## CASEWORK CABINET SUBSTRATE

No added formaldehyde (NAF) Medium-density Fibreboard (MDF)



## CASEWORK FINISH OPTIONS

ChromacoatPlus/Chromacoat (painted)

Wood Veneer on MDF

Thermofoil on MDF Tiles

DIRTT-approved custom finishes

**NOTE:** Refer to ICE for all finish options.

## DIMENSIONS + DETAILS

### WEIGHT RESTRICTIONS

Refer to the [DIRTT Casework Shelf Deflection Guide](#) for more information or contact [caseworkdesign@dirtt.com](mailto:caseworkdesign@dirtt.com) for details on weight restrictions and approval.

### CASEWORK DIMENSIONS

|                                   |                             |
|-----------------------------------|-----------------------------|
| Standard standing counter height  | 36" (914mm) AFF             |
| ADA countertop height             | 34" (864mm) AFF             |
| Bar height/transaction top height | 42" (1067mm)<br>AFF         |
| Seated work surface height        | 29" (737mm)–<br>30" (762mm) |

Maximum and minimum lengths, widths and heights for casework are specified in ICE.

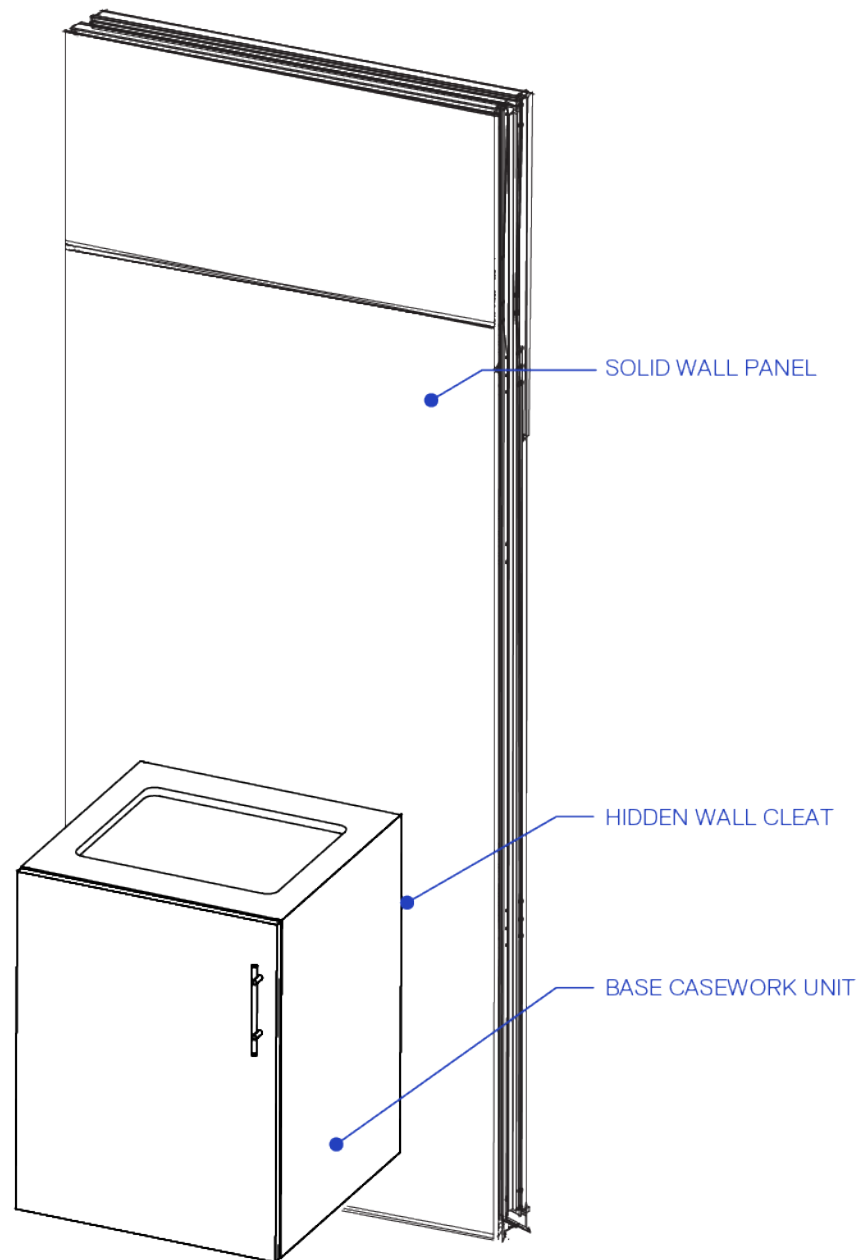
Units less than 9 ½" (241mm) wide or 13 ¼" (337mm) deep will not get a panel cutout and will have full tops only.

If a Casework design exceeds the limitations in ICE, contact [caseworkdesign@dirtt.com](mailto:caseworkdesign@dirtt.com) to determine what is manufacturable.



# BASE CABINET

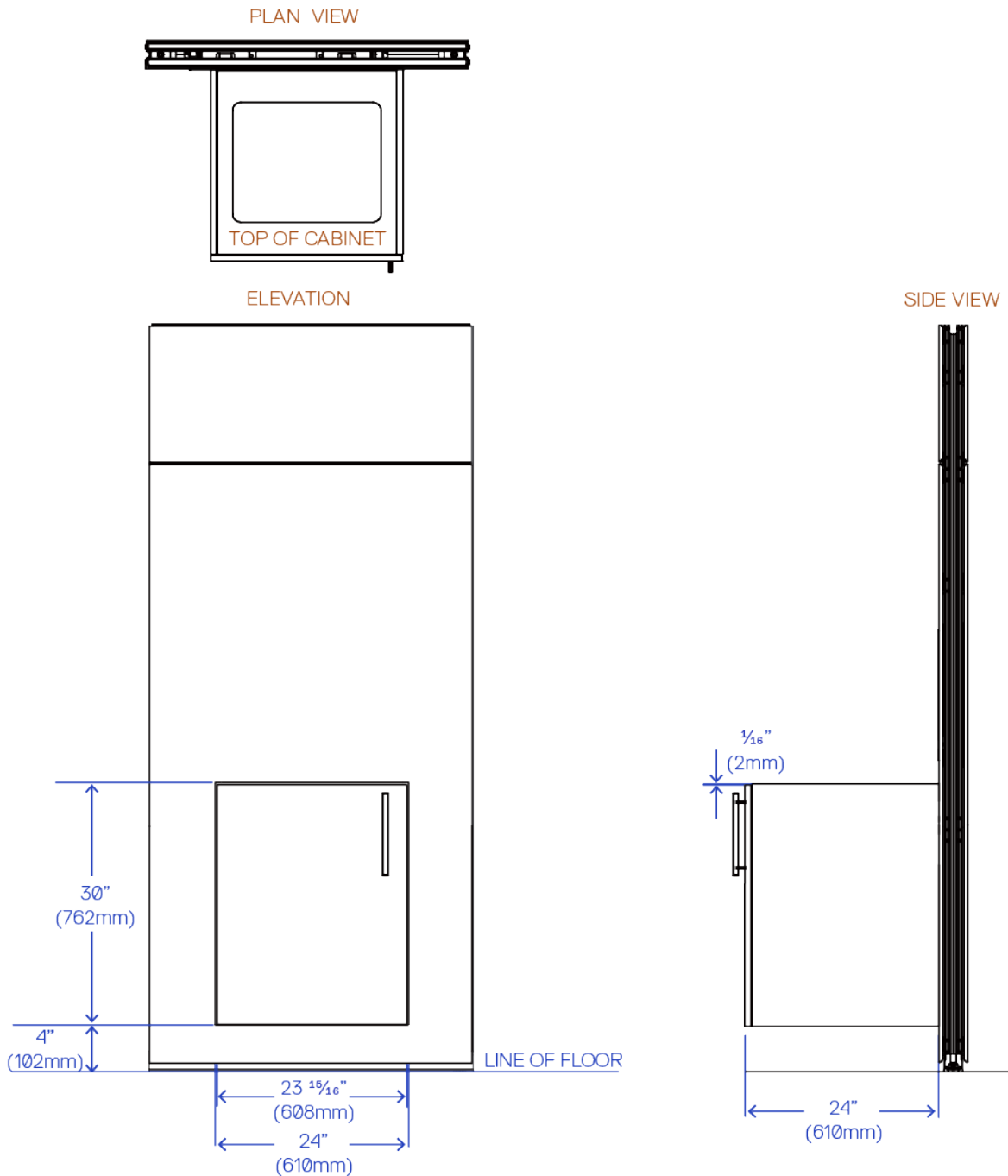
## INSTALLED WITH DIRTT WALL FRENCH CLEAT





# BASE CABINET

## PLAN, ELEVATION AND SIDE VIEWS



\*NOTE: These drawings are examples of typical Base Casework units. Each casework unit is customized to the specifications of the client.



## BASE CABINET

### INSTALLED WITH FRENCH CLEAT

